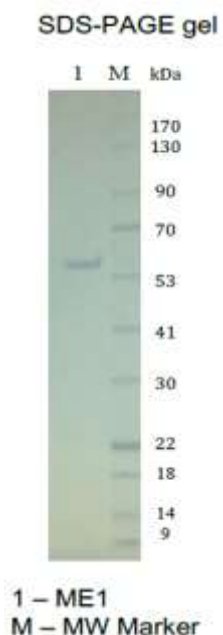




## Product Information

<b>Product Name:</b>	Recombinant Human ME1
<b>Synonym(s):</b>	NADP-dependent malic enzyme, Malic enzyme 1
<b>Catalog Number:</b>	NU03052
<b>Description:</b>	ME1 is a cytosolic, NADP-dependent enzyme that generates NADPH for fatty acid biosynthesis. The activity of this enzyme, the reversible oxidative decarboxylation of malate, links the glycolytic and citric acid cycles. The regulation of expression for this gene is complex. Increased expression can result from elevated levels of thyroid hormones or by higher proportions of carbohydrates in the diet. [provided by RefSeq, Jul 2008].
<b>Expression Source:</b>	<i>E. coli</i>
<b>Molecular Weight:</b>	65.2 kDa
<b>Purity:</b>	95 % or more by SDS-PAGE



**Tag:** His-Tag C-terminus  
**UnitProt #:** P48163  
**Formulation:** 30 mM Tris pH 7.4, 500 mM NaCl, 10% glycerol, 3mM MgCl<sub>2</sub>,  
5mM beta-mercaptoethanol, 1mM PMSF, 1mM Benzamidine  
**Reconstitution:** Clear solution in 30 mM Tris, pH7.4, 150 mM NaCl, 40% glycerol, 5 mM DTT  
**Application:** Binding assay, small molecule inhibitor screening, substrate of kinase, antigen, ELISA,  
Western blot, crystallization, and co-crystallization studies.  
**Storage and Stability:** Upon delivery aliquot and store at -80 °C. Avoid multiple freeze-thaw cycles. The  
protein is stable for 12 months at -80 °C, for 2-4 weeks at 4°C.

### Amino Acid Sequence

MEPEAPRRRH<sup>TH</sup>Q<sup>R</sup>GYLL<sup>TR</sup>NPHLNKDLAFTLEERQQLNIHG<sup>LL</sup>PPSFNSQEIQVLRVVKNF<sup>EH</sup>LN<sup>S</sup>DFDRYLL<sup>LL</sup>MD  
LQDRNEKLFYRVL<sup>T</sup>SDIEK<sup>F</sup>MP<sup>I</sup>VY<sup>T</sup>PTVGLACQ<sup>Q</sup>YSLVFRKPRGLFITIH<sup>DR</sup>GHIASVLNAW<sup>P</sup>EDVIKAI<sup>V</sup>VT<sup>D</sup>G<sup>E</sup>  
RILGLGDLGCNGM<sup>G</sup>IPV<sup>G</sup>KLALY<sup>T</sup>ACGGMNPQ<sup>E</sup>CLPVILDVGTENEELLK<sup>D</sup>PLYIGLR<sup>Q</sup>RRV<sup>R</sup>GSEYDD<sup>F</sup>LDEF<sup>M</sup>E<sup>A</sup>  
VSSKYGMNCLIQ<sup>F</sup>EDFANVNA<sup>F</sup>RLLN<sup>K</sup>YRNQ<sup>Y</sup>CTFNDDIQGTASVAVAGLLAALRI<sup>T</sup>KNK<sup>L</sup>SD<sup>Q</sup>TILFQ<sup>G</sup>AGEAAL<sup>G</sup>  
IAHLIVMALEKEGLPKEKAIKKIWL<sup>V</sup>DSKGLIVKGRASLTQEKEKFAHEHEEMKNLEAIVQEIKPTALIGVAAIGGA  
FSEQILKDMAAFNERPIIFALSNPTSKAEC<sup>S</sup>AEQCYKITKGRAIFASGSPFDPVTL<sup>P</sup>NGQTLYPGQGNNSYVFP<sup>G</sup>V<sup>A</sup>  
LGVVACGLRQITDNI<sup>F</sup>L<sup>T</sup>TAEVIAQQVSDKHLEEGRLYPPLNTIRDVSLKIAEKIVKDAYQEKTATVYPEPQ<sup>N</sup>KEAF  
VRSQMYSTDYDQILPDCYSWP<sup>E</sup>EVQKIQT<sup>K</sup>VDQLEHHHHHH

**Nacalai USA, Inc.**

TEL: (858) 404-0403

Email: [info@nacalaiusa.com](mailto:info@nacalaiusa.com)